

For replacement of Powerhead Assembly, Complete, which includes cylinder block and crankcase, pistons, connecting rods and bearings, etc., order the part number listed:
 12893A87 Powerhead Assembly (6) - use with WMC-20/20A Carb.
 12893A92 Powerhead Assembly (6) - use with WMC-20B Carb.
 811686A92 Powerhead Assembly (6/8/9.9)

When ordering replacement Piston Ring Assemblies refer to Notes 1 and 2 listed below:
 Note #1: The enclosed assembly contains 4 rectangular piston rings as shown in figure #1.
 Note #2: The enclosed assembly contains 4 keystone piston rings as shown in figure #2.

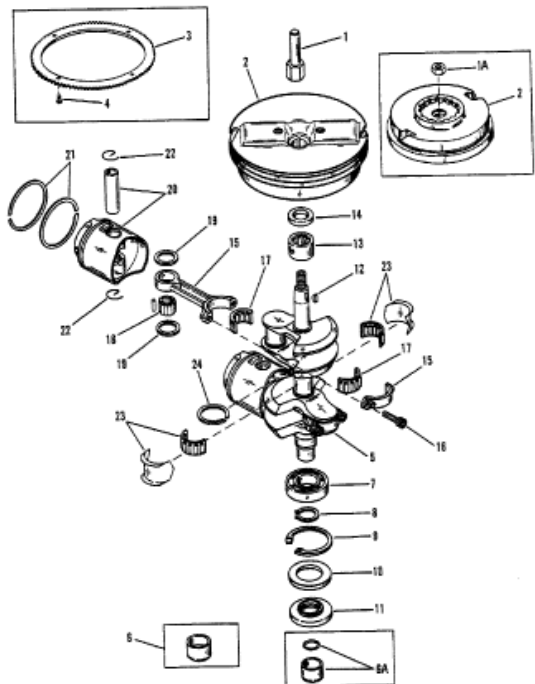
Figure #1



Figure #2



CRANKSHAFT, PISTONS AND FLYWHEEL



Parts List						
Ref	Class	Part	Description	Qty	Comment	Footnote
1		42691	SHAFT, FLYWHEEL USE WITH S	1		
2	260	8908A 2	FLYWHEEL ASSEMBLY USE W/1	1		
1A	11	818591	NUT USE WITH NUT	1		
2	260	818540A 2	FLYWHEEL ASSEMBLY USE W/1	1		
3	43	99301	RING GEAR, FLYWHEEL ELECTF	1		
4	10	40039106	SCREW, RING GEAR TO FLYWHI	4		
5	468	8471A 2	CRANKSHAFT ASSEMBLY	1		4
6	26	42890	OIL SEAL, (DESIGN I)	1		
6A		818630A 1	SLEEVE KIT (INCLUDES O-RING	1		4
7	30	41341	BALL BEARING, LOWER	1		4
8	53	20940	SNAP RINGG (SMALL) (OLD DESI	1		
9	53	42132	RETAINING RING	1		
10	12	13031	WASHER, LOWER	1		4
11	26	12566 1	OIL SEAL, LOWER	1		4
12	28	20094	KEY	1		
13	31	41342	ROLLER BEARING	1		4
14	26	12567 1	OIL SEAL, UPPER	1		4
15	637	8477A 2	CONNECTING ROAD ASSEMBLY	2		4
16	10	823460	SCREW	4		4
17	31	42076A 1	ROLLER BEARING	3		4
18	29	42186	NEEDLE BEARING, PISTON EN	48		4
19		43348	THRUST BEARING	4		4
20	773	9756A 2	PISTON AND PIN ASSEMBLY	2		4
21	39	42079A 4	PISTON RING ASSEMBLY	1	THE ENCLOSED ASSEMBLY CO	
21	39	18514A 4	PISTON RING ASSEMBLY	1	THE ENCLOSED ASSEMBLY CO	4
22	40	42202	LOCK RING	4		4
23		41373A 1	LINER ASSEMBLY, MAIN BEARIN	1		4
24	26	818901	SEAL, MAIN BEARING	1		4
-		12893A87	POWERHEAD ASSEMBLY, COMF	1	(6) (USE WITH WMC-20/20A CAF	
-		12893A92	POWERHEAD ASSEMBLY, COMF	1	(6) (USE WITH WMC-20B CARB.)	
-		811686A92	POWERHEAD ASSEMBLY, COMF	1	(6/8/9.9)	